

Ground Floor Plan

Corner Unit

Ground Floor : 125.50 m² (1,350 ft²)

First Floor : 99.42 m² (1,069 ft²)

Total Area : 224.92 m² (2,420 ft²)

Intermediate Unit

Ground Floor : 121.26 m² (1,305 ft²)

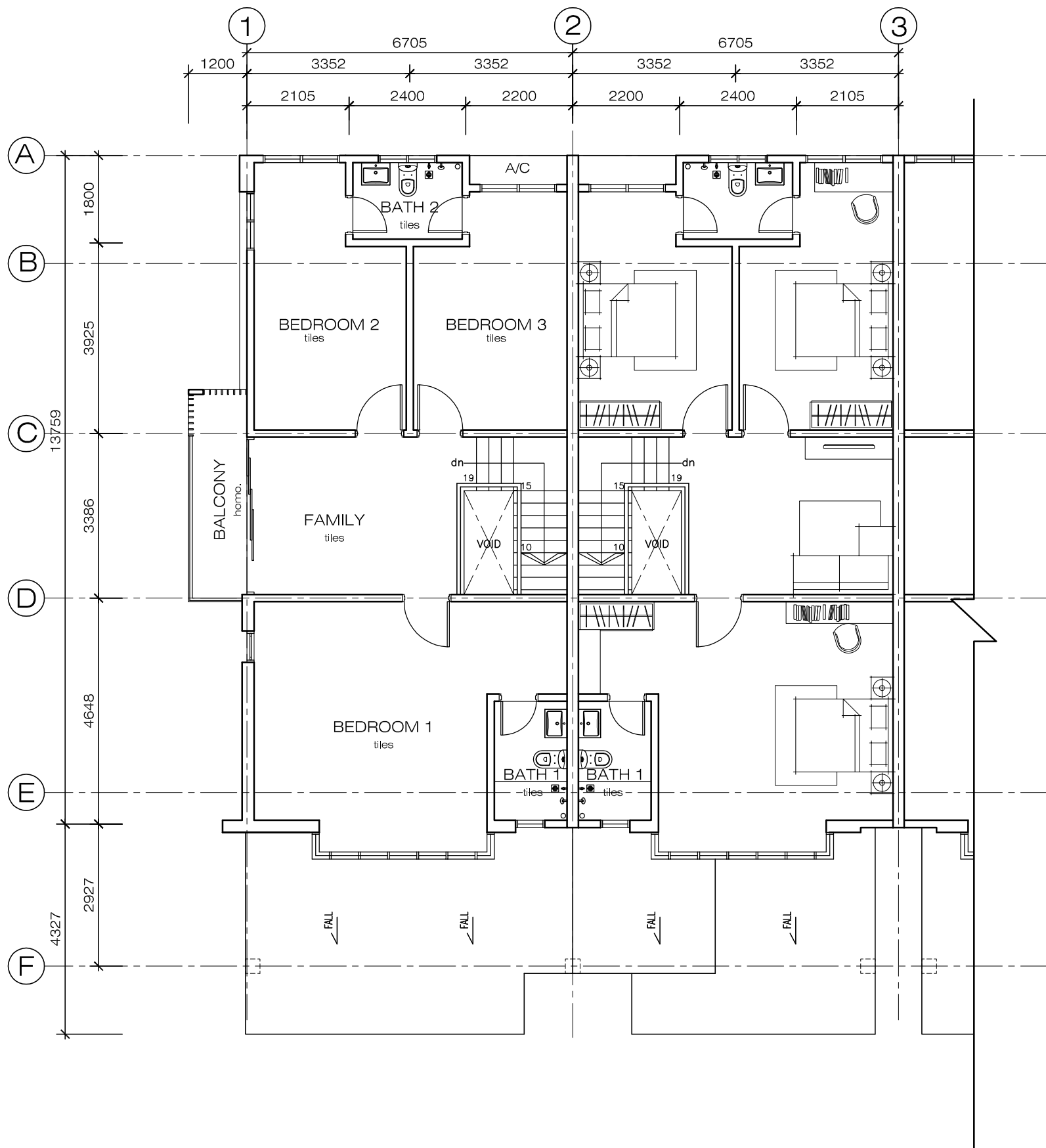
First Floor : 94.74 m² (1,019 ft²)

Total Area : 216.00 m² (2,324 ft²)

TYPE C (22' X 70') Double Storey Terrace House

Proposed Taman Nusa Indah 2 For Country View Resources





First Floor Plan

TYPE C (22' X 70') Double Storey Terrace House

Proposed Taman Nusa Indah 2 For Country View Resources

